

Building a Window to the Sea: Ocean Research Interactive Observatory Networks (ORION)

BY OSCAR SCHOFIELD AND MARGARET K. TIVEY

INTRODUCTION

For centuries, oceanographers have relied on data and observations about the ocean and the seafloor below gathered from ships during cruises of limited duration. This expeditionary research approach has resulted in major advances in understanding global ocean circulation, the energy associated with mesoscale circulation, plate tectonics, global ocean productivity, and climate-ocean coupling. These and many other successes have expanded our view of Earth and ocean processes, and have demonstrated a need for sampling strategies spanning temporal and spatial scales not effectively carried out using ships. To address this observational gap, community efforts in the United States consistently have recommended that funding

agencies support development of the capability to maintain a continuous sampling and monitoring presence in the ocean.

THE NEED FOR A CONTINUOUS PRESENCE IN THE OCEAN

Current inability to sample the oceans coherently is a critical problem. It can introduce biases, compromising our understanding of a large range of significant ocean processes. For example, the role that large storms play in enhancing the productivity in the oligotrophic (nutrient-poor) open ocean was not appreciated until they were sampled by fortuitously timed open-ocean cruises (Glover et al., 1988) and robust bio-optical moorings capable of providing measurements when ships could not remain at sea (Dickey et al., 1998). Documentation of storm-induced changes has helped reconcile the widely disparate estimates in global ocean productivity based on either discrete biology rate measurements (Platt, 1984) or bulk chemical budgets (Schulenberg and Reid, 1981; Jenkins and Goldman, 1985). Similar examples exist from all disciplines in oceanography. As a result, attention has

turned to the development of a sustained and continuous presence in the ocean. The relevance of this approach is validated by the successes of the Long Term Ecological Research program (information available online at <http://lternet.edu/>) and the few available oceanic time-series data sets (McGowan et al., 1998; Karl and Lukas, 1996; Michaels and Knapp, 1996) that have documented the importance of high-frequency annual and decadal processes.

THE OPPORTUNITY TO CREATE AN INTEGRATED OCEAN OBSERVATORY NETWORK

Myriad community workshops and reports (Table 1) in the United States have called for populating the ocean with an array of *in situ* fixed and mobile platforms that will complement the advancing capabilities of remote sensing and numerical modeling. *In situ* technologies have matured to the point where they are ready to be deployed as part of an integrated ocean observing network (National Research Council, 2003). The U.S. oceanographic community, in response to workshop recommendations (Table 1),

Oscar Schofield (oscar@imcs.rutgers.edu) is Associate Professor at Coastal Ocean Observation Laboratory, Institute of Marine and Coastal Sciences, Rutgers University, New Brunswick, NJ. **Margaret K. Tivey** is Associate Scientist at Department of Marine Chemistry and Geochemistry, Woods Hole Oceanographic Institution, Woods Hole, MA.

Workshop and/or Report Title	Year
International Conference on the Ocean Observing System for Climate	1999
Developing Submergence Science in the Next Decade (DESCEND)	1999
Symposium on Seafloor Science	2000
Ocean Sciences at the New Millennium	2001
Integrated and Sustained Ocean Observing System Workshop	2002
Office of Naval Research/Marine Technology Society Buoy Workshop	2002
Scientific Cabled Observatories for Time-Series (SCOTS)	2002
Coastal Ocean Processes and Observatories: Advancing Coastal Research	2002
Autonomous and Lagrangian Platforms and Sensors (ALPS)	2003
Implementation Plan for the DEOS Global Network of Moored-Buoy Observatories	2003
NEPTUNE Pacific Northwest Workshop	2003
Biological and Chemical Instrumentation in the Ocean	2003
Links between OOI and IODP Workshop	2003
REgional Cabled Observatory Network (of Networks) (RECONN)	2003
Technical Issues Related to Cable Re-use	2003
Coastal Observatory Research Arrays (CORA): A Framework for Implementation Planning	2003
Ocean Research Interactive Observatory Networks (ORION)	2004

Table 1. A list of some of the many workshops and/or reports that have called for sustained ocean observations. All propose building permanent observing capabilities in the world's oceans. Links to many of the reports can be found in the Library link at <http://www.coreocean.org/>.

is now poised to gain a substantial investment for the infrastructure through a variety of U.S. federal initiatives. The common goals of these science plans are to maintain a permanent presence in the ocean, to collect sustained, spatially resolved time-series measurements, and to deliver data back to scientists on land in real time. It will be possible to access data collected from integrated and diverse sensor packages mounted on moorings, seafloor cables, satellites, aircraft, drifters, and autonomous vehicles. This sustained presence will complement traditional ship-based research, permitting adjustments to sampling strategies.

Many of the technical elements of pro-

posed observatories have been highlighted at workshops focused around specific technologies. For example, the Scientific Cabled Ocean Time Series (SCOTS; Glenn and Dickey, 2003) workshop focused on science issues that could be addressed using seafloor cable networks, while the Autonomous and Lagrangian Platform and Sensors (ALPS; Rudnick and Perry, 2003) workshop focused on the utility of mobile vehicles and drifters. While these focused planning efforts were needed to identify critical technical and scientific issues, and to exchange ideas within specific communities, they did not allow for effective communication of information across groups, or for coordination of a large-

scale strategy for ocean observatories. This compartmentalization was also mirrored in the science planning efforts, with different workshops focused on different spatial scales (e.g., global, regional, coastal).

OCEAN RESEARCH INTERACTIVE OBSERVATORY NETWORKS (ORION)

To coordinate a large-scale strategy for ocean observatories, and to ensure that the growing number of research observatory efforts complement and leverage off of each other, the U.S. National Science Foundation (NSF) established the Ocean Research Interactive Observatory Networks (ORION) Program Office in March 2004. ORION provides the “big tent” for all aspects of the construction and operation of an integrated ocean observatory network. It also works to facilitate cooperation with other NSF initiatives that lie outside the Geosciences Directorate, and with those at other federal agencies. ORION office responsibilities include management of the ORION program, establishment of a community advisory structure, facilitation of community outreach, oversight of network construction, and operation and maintenance of the network (Clark and Is-ern, 2003). Given this charge, ORION has an all-encompassing view of research-based, ocean-observing efforts, ensuring seamless integration of the observing system's diverse elements.

One of the first responsibilities of the ORION Program Office is to prepare for the Ocean Observatory Initiative (OOI), which will provide infrastructure funds from NSF's Major Research Equipment and Facilities Construction (MREFC) account (~\$250M). The OOI has been listed in the President's budget request to Congress as a high-priority item for fiscal year 2006 (October 1, 2005 through September 30, 2006). The OOI has

three major elements: (1) re-locatable deep-sea buoys that can be deployed in harsh environments, such as the Southern Ocean, (2) a regional cabled network consisting of interconnected monitoring sites on seafloor spanning scientifically interesting geological and oceanographic regions, and (3) a network of long-duration, continental time series, cross-shore observatories augmented with re-locatable instrument arrays. Potential related initiatives such as ALPS could provide the capability to develop fleets of autonomous drifters or vehicles to provide a Lagrangian picture (a frame of reference that moves with the fluid) to complement Eulerian data (data that are a function of space and time) provided by the OOI fixed instrumentation. ORION's success will in part be measured by how well these diverse observational communities can cooperate to enable each other's successes.

THE 2004 ORION WORKSHOP

As a first step in getting the ORION office established, the Dynamics of Earth and Ocean Systems (DEOS) Steering Committee, with support from NSF, convened an open community workshop in early January 2004 in San Juan, Puerto Rico. Over 300 participants attended the meeting from eight countries, with 110 academic, federal, and industrial entities represented. The ORION Workshop was organized with the goal of formulating science, technology, and education and outreach priorities for the OOI, which would allow definition of appropriate observational arrays. Compared with past workshops, participants were not constrained by a specific scientific focus (solid Earth, air-sea fluxes, or marine food webs), geographical footprint (coastal, regional, or global) or observational platform (cables or autonomous underwater vehicles). Prior

to the workshop, participants had Web access to the agenda, background information papers, and an evolving list of science questions that would be discussed by various groups during the workshop. The first day on site was devoted to science, technology, and education overview talks, a poster session, and a panel discussion of broader ocean-observing activities with representatives from the NSF, the National Oceanic and Atmospheric Administration, the Office of Naval Research, Ocean.US, and the National Aeronautics and Space Administration. The remainder of the workshop then focused on highly interactive small-group discussions of science, technology and engineering, and education and outreach issues. The relatively large (>35 participants) technology and education and outreach groups had dual tasks: to send pairs of educators or engineers to join and participate in science small-group discussions, and to periodically reconvene to tackle technology or education and outreach issues that arose during the science discussions. The goal was to weave technology and educational opportunities into the initial observatory network design. The smaller science working groups, all with fewer than 20 participants, met to discuss how access to two-way communication, sustained data recording, and power could be used to tackle questions related to Earth structure, plate dynamics, fluid-rock interactions, air-sea fluxes, biogeochemical cycles from the rivers to the continental slope, benthic water-column coupling, global ocean circulation and climate, global biogeochemistry, small-scale mixing and nearshore processes, marine food webs, impact of humans on marine ecosystems, and marine ecology. The groups were encouraged to mix and evolve the science focus as desired. These groups were asked to identify: (1) the most exciting

research opportunities that could be provided by ORION but could not be addressed using traditional assets and techniques, (2) the spatial and temporal scales required, (3) the priority measurements and parameters needed, (4) the education and outreach opportunities, and (5) a timeline for addressing the question or experiment.

ORION WORKSHOP RESULTS

Currently, the results of all of the working group discussions are being compiled in a workshop report, however, we take the opportunity in this paper to provide an introduction to these conference discussions. Within the science and technology working groups, several common themes emerged, including the need for high-frequency, continuous, time-series measurements in broad-scale spatial arrays. These data would allow interdependencies of physical, biological, chemical, and geological variables to be studied, and would provide coherent data to enable modeling efforts. Common scientific questions, though aimed at different environments within the ocean, also emerged, including:

- *How significant are stochastic processes in structuring ocean physics, chemistry, biology, and geology?* Most researchers readily acknowledge that episodic events likely have a large influence on ocean processes, yet we have been unable to adequately sample these events and effectively quantify their relative significance (Figures 1 and 2). ORION is required to provide the tools to enable scientists to understand the role of stochastic processes in the oceans.
- *What is the relative importance of non-periodic (secular) versus cyclical processes in driving observed variability in the ocean?* To understand the potential changes in

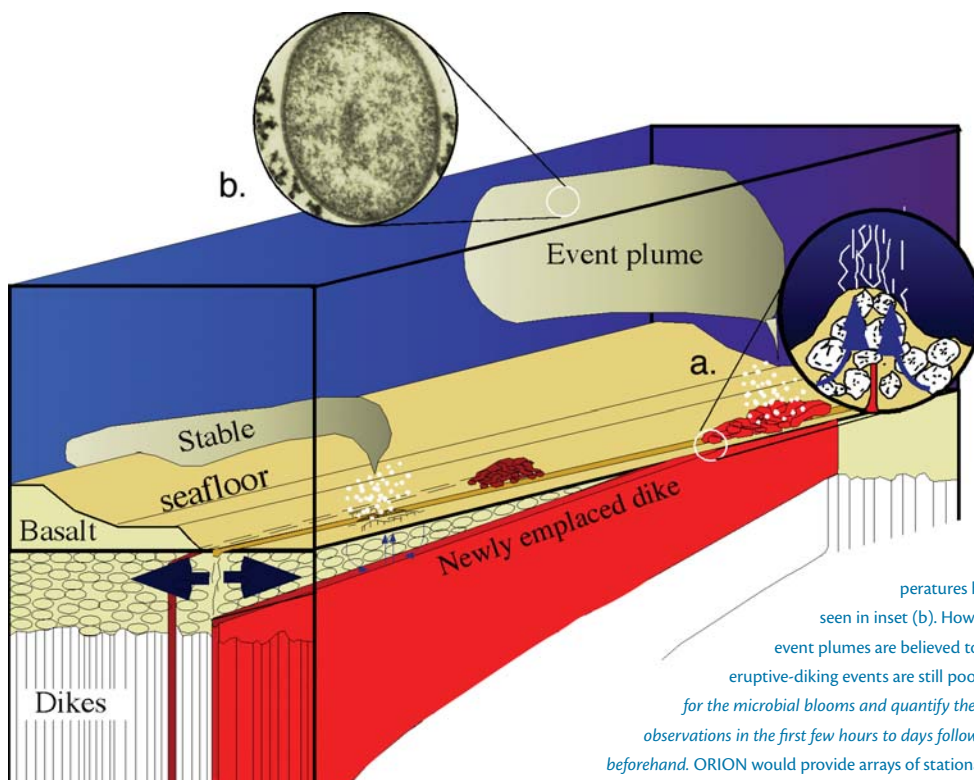


Figure 1. Ridge-crest hydrothermal systems are affected by short-lived volcanic and tectonic events as shown by data acquired using coordinated, ship-based responses to dike-eruptive events (e.g., recorded by SOSUS [the U.S. Navy's SOund SURveillance System hydrophone arrays] in the Northeast Pacific). These studies have documented the presence of event plumes (i.e., large [>10 kilometers in diameter by hundreds of meters thick] plumes of water containing excess heat and minerals indicative of hydrothermal activity) above many eruptions, transient increases in fluxes from chronic plumes that then decrease exponentially, and as seen in (a) the presence of spectacular microbial blooms that result as volatiles and chemical species leached from rocks provide nutrients to microorganisms. Organisms have been cultured from event plume fluids, including hyperthermophiles (organisms that grow best at temperatures higher than 80°C) that fall within the order Thermococcales, as seen in inset (b). However, because the eruptions typically last only a matter of days and event plumes are believed to form in a matter of hours to days, many characteristics of these eruptive-diking events are still poorly understood. To adequately understand the processes responsible for the microbial blooms and quantify the variable fluxes associated with these events requires high-resolution observations in the first few hours to days following the event and this is only feasible if the instruments are in place beforehand. ORION would provide arrays of stationary sensors (seismometers, geodetic instruments, temperature probes, current meters, camera systems, water column moorings) together with mobile platforms to allow scientists to detect and accurately locate the event and define its dimensions and characteristics; to characterize changes in the flow rates, physical properties, chemistry, and microbial content of low- and high-temperature hydrothermal fluids; to record the evolving impact of the event on hydrothermal vent sites and surrounding macrofauna; to constrain the changes in the dimensions and composition of the hydrothermal plumes; and to survey extensive areas of seafloor and water column during the early stages of the event. Figure kindly provided by D.S. Kelley (after Delaney et al., 1998, with inset (b) from Summit and Baross, 1998).

Photosynthetic Pigment Time Series for Station Aloha Region HOT in situ and SeaWiFS Satellite-derived data

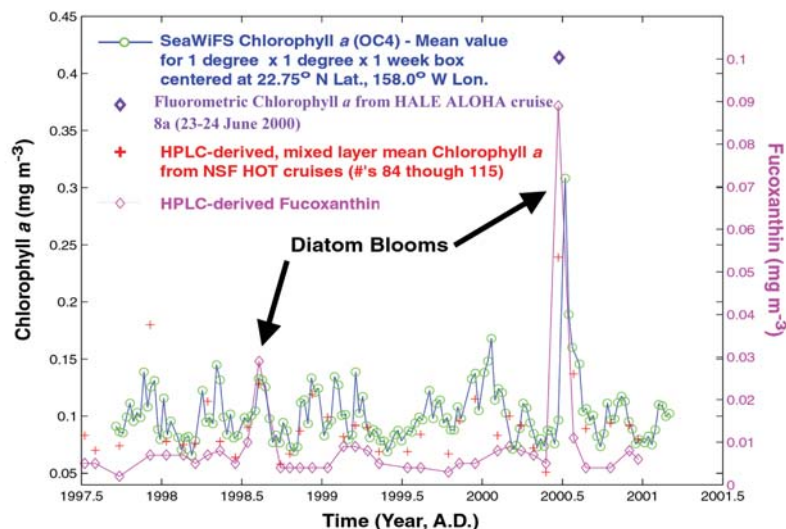
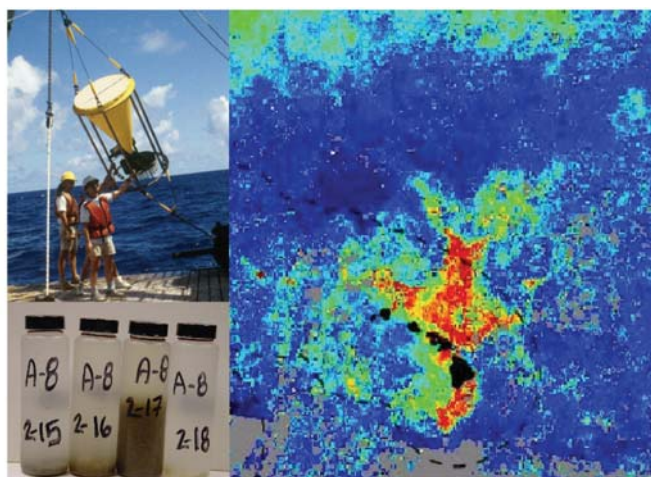


Figure 2. Potential sequestration of carbon from the atmosphere into the ocean is strongly dependent on new production, and the corresponding export flux, of organic matter from surface waters to the deep sea. New production events occur over seasonal and shorter time scales. These shorter-time-scale responses, leading to significant export flux, result from mesoscale eddies, storms, and atmospheric dust deposition. The efficiency with which bloom biomass translates into export flux is also dependent on phytoplankton taxa. For example, results collected at the Hawaii Ocean Time series (HOT) illustrate that a single diatom bloom can account for the majority of exported material over several years. The vial inset shows the dramatic variation in the export flux measured by sediment traps. These results suggest that export flux may be dominated by episodic blooms that are dramatic in the amount of organic carbon produced, but are short-lived in terms of time. Sediment traps still remain the primary means to quantify the export flux; however, these approaches often have a limited spatial footprint. Integrated arrays of fixed and mobile systems may provide a new means to measure export flux. The SeaWiFS satellite image above shows a large phytoplankton bloom (red = high chlorophyll) at the HOT site. Satellites provide wonderful spatial coverage, but often miss subsurface phytoplankton blooms. ORION would provide the array of fixed and mobile assets that could be used to bridge this gap and to measure new production and the resulting export flux. This would complement community-wide efforts focused on understanding the oceans' in the global carbon cycle. Figures provided by R.K. Bidigare and D.M. Karl, University of Hawaii. The HOT team is also gratefully acknowledged.

the world's oceans, the importance of annual, multi-year, and decadal cycles needs to be judged against those of secular (non-periodic) changes analogous to the increasing trend in atmospheric CO₂. This requires a comprehensive understanding of the fundamental mechanisms that underlie cyclical processes in the world's ocean, and a sustained spatial time series obtained by ORION (Figure 3).

- *How are human activities affected by the oceans, and how are the oceans affected by human activities? What are the potential effects on humankind from the observed changes in the oceans?* The oceans have always affected people living in coastal areas (Figure 4). In addition, humans are exerting an increasingly large influence

on the ocean, but the consequences of this activity have yet to be defined (Figure 5). Additionally, any changes in the oceans may have negative consequences for humans. Understanding the influence of human activities requires comprehending the interplay of ocean physics, chemistry, geology, and biology. This requires a comprehensive view spanning local to global scales, which will be provided by an integrated ocean-observing network.

The education and outreach group identified an overarching goal to increase student and public awareness, understanding, and appreciation of the oceans in the Earth system; strengthen science and technology education; and expand society's understanding and appreciation of the oceans' life-giving

processes that sustain us and support our well-being. Their specific recommendations include:

- *create an office to coordinate ORION education and communications.* This office would provide to the ORION community education and dissemination expertise that is impractical or inefficient to imbed in individual projects.
- *include a data management and content translation facility with expertise in translating and preparing scientific and technological content for use by educators and communications professionals.*
- *promote the development and diversity of the ocean-related workforce.*
- *stimulate the young and old to understand and appreciate the vital role of the ocean*

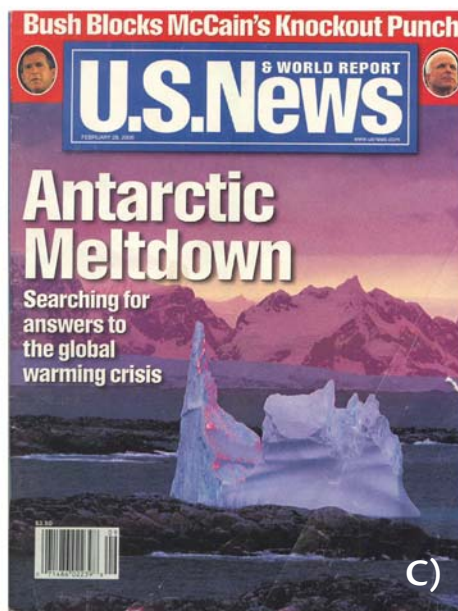
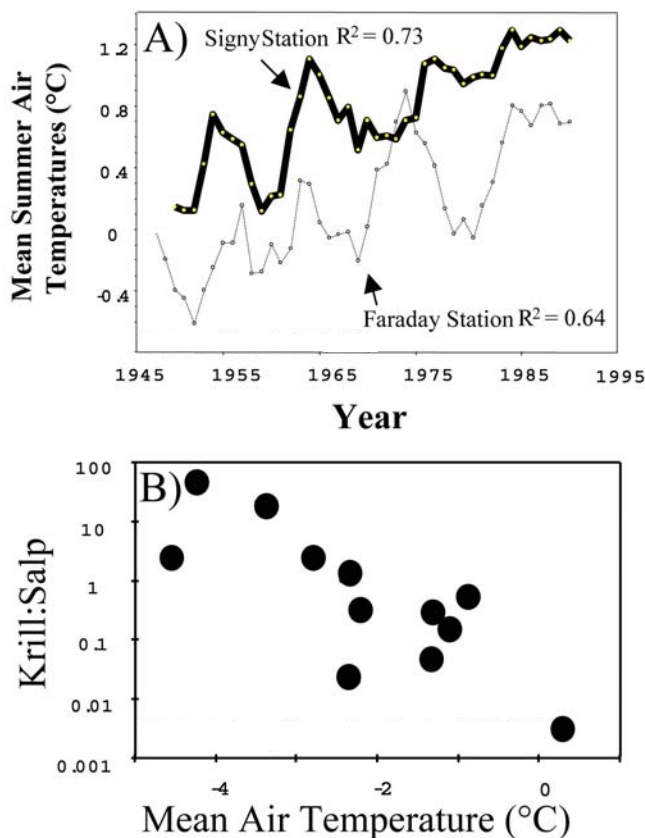


Figure 3. (A) Time series of air temperatures from data collected by the British Antarctic Survey along the Antarctic Peninsula. The warming trend over the past 50 years is one of the fastest on Earth. What proportion of this temperature change reflects secular (non-periodic) or cyclical processes given recent reports of multi-decadal cycles (Chavez et al., 2003)? While oceanic time series do exist, such as the successful thirteen-year Long-Term Ecological Research (LTER) program along the peninsula (more information at http://iceflo.icess.ucsb.edu:8080/ice_hp.php), they are not long enough yet to allow underlying processes of the observed changes to be determined (redrawn from Smith, 1994). Inset (B) shows the relationship of the krill to salp ratio to the mean summer air temperatures along the Antarctic Peninsula

(redrawn from Moline et al., in press, based on data from Loeb et al, 1997). The shift to a gelatinous second producer has profound implications for the Antarctic ecosystem. The mechanisms underlying this shift are being debated. Competing hypotheses will require a spatially extensive observational array that couples acoustic, bio-optical, physical, and atmospheric data. In (C) we see a great opportunity to engage the general public in the global change debate, which is a visible news item in the popular press (reprinted with permission, copyright 2000, U.S. News & World Report). ORION will need to facilitate outreach by providing an avenue for oceanographers to communicate their scientific discoveries to the general public and news media.

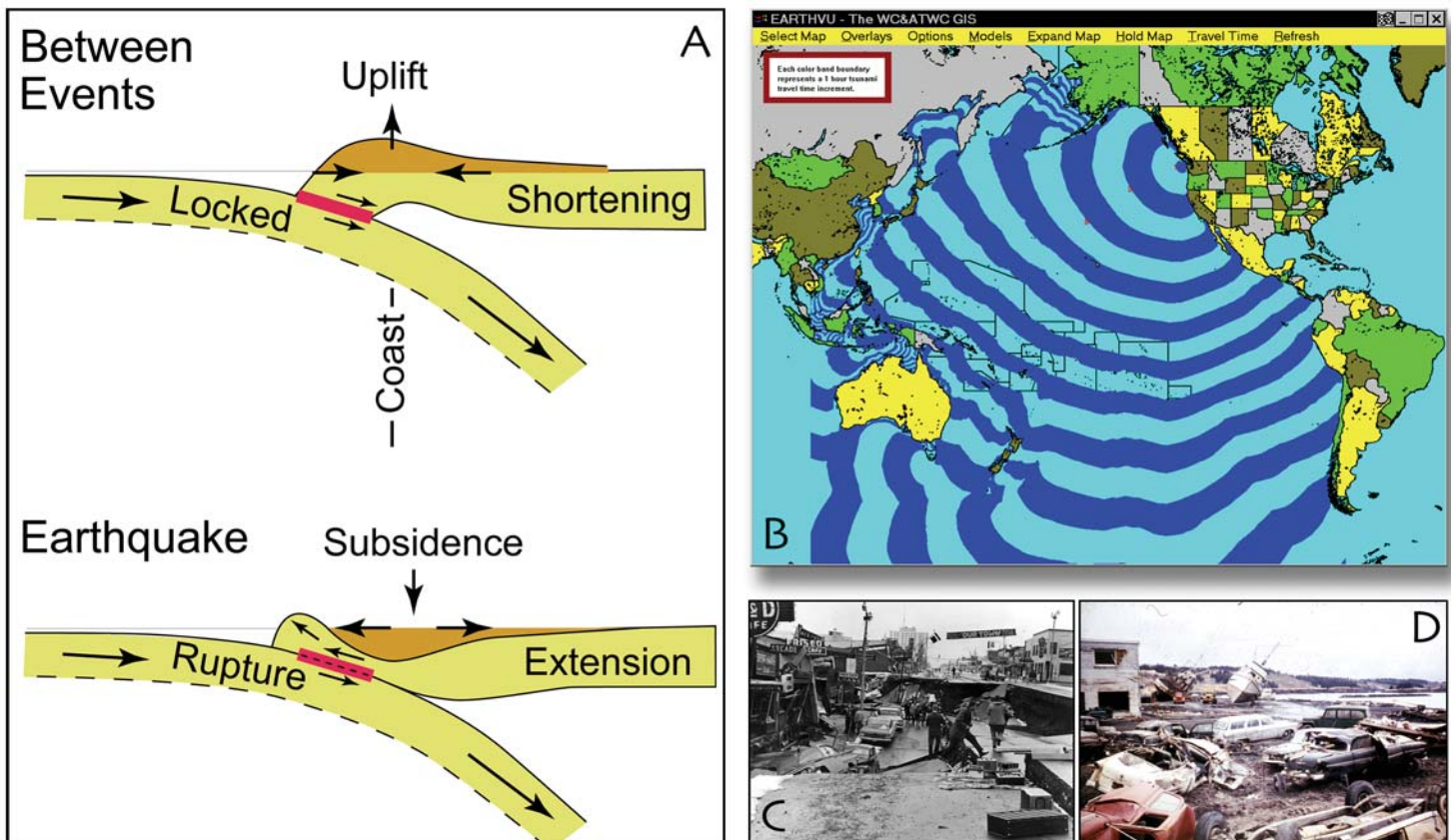


Figure 4. Inset (A) shows a fault rupture at subduction zones, which results in very large earthquakes, and the consequent upheaval of oceanic crust affects the overlying water column, causing tsunamis. These waves can wash over nearby coasts within minutes, or cross the ocean within many hours (from http://www.pnsn.org/HAZARDS/CASCADIA/tsunami_deposits.html). (B) Model results showing the expected travel times across the Pacific Ocean for the tsunami that resulted from the very large January 26, 1700 Cascadia Subduction Zone earthquake that had an estimated magnitude of 9.0. (from <http://wcawtc.arh.noaa.gov/ttt/ttt.htm> and http://www.pnsn.org/HAZARDS/CASCADIA/cascadia_event.html). Inset (C) shows the collapse of Fourth Avenue near C Street, in Anchorage, Alaska, due to an earthquake-caused landslide in 1964. This Great Alaska Earthquake was the second largest ever recorded, with a magnitude of 9.2 (more information available at <http://apsn.awcable.com/1964.htm>; photo reprinted from U.S. Geological Survey, 1964a). (D) Tsunami damage along the waterfront at Kodiak, Alaska in 1964. The open-ocean tsunami resulted in four deaths in Oregon, 12 in California, and about 21 in Alaska (more information available at <http://apsn.awcable.com/1964.htm>; photo reprinted from U.S. Geological Survey, 1964b, cover page). ORION will provide real-time, networked access to data from seismometers and pressure sensors located in arrays along the deformation front of the Cascadia Subduction Zone that will be used to quantify offshore ground motion. This type of real-time data access has the promise of enhancing earthquake and tsunami early-warning systems.

in the Earth system, and its importance to well-being.

Specific recommendations from the technology and engineering group include:

- use common engineering methods to develop and operate OOI facilities. OOI observatories will require large and complex facilities for implementation and operation. Their development and operation require use of engineering methods, which while familiar in the physics community, are not commonly employed in the oceanographic world. In particular, the disci-

plines of project management and system engineering will be essential to the success of large-scale engineering activities.

- employ a careful process to permit the engineering community to understand science needs. This is the “input” to the more formal engineering process described above. Science needs could be extracted from “use cases,” which in turn would build on the science plan. These use cases would allow the extraction of “functional requirements,” which in turn would allow the development of engineering specifica-

tions. The vital importance of this part of the process is clear because no engineering process, no matter how sophisticated, can overcome being given the wrong requirements.

- develop the capability for event response adaptive sampling using ocean observatories.
- promote collaboration between ORION and the information-technologies computer-science community. It will be important for ORION to leverage strong initiatives at NSF and at other federal agencies for

both funding and scientific/engineering expertise.

- *continue development of acoustics and optics, which are especially critical for biological and chemical oceanographers.* ORION will be much stronger if it reaches out to these communities, especially as NSF historically has not invested heavily in acoustics or optics research.

CHALLENGES TO OVERCOME

As with all great endeavors, significant challenges need to be overcome to succeed in gaining a sustained and continuous presence in the ocean. Some of these were identified by the science, education, and engineering attendees in Puerto Rico, and all will require a concerted and proactive effort by the U.S. ORION effort. Identified challenges include:

- *vigorously pursuing international partnerships.* The ORION Program Office should work with countries that already have extensive observatory efforts (e.g., Canada, Japan, and the countries of the European Economic Union) to ensure that all ocean-observing networks are fully integrated. Some of the international partnerships are mature. For example, the proposed North-East Pacific Time-series Undersea Networked Experiments (NEPTUNE) represents a formal partnership between Canada and the United States, with Canada already having received funding on the order of \$31.9 million from the Canada Foundation for Innovation and \$30.5 million from the British Columbia Knowledge Development Fund. Continuing and building partnerships such as NEPTUNE is critical to a successful ocean-observatory strategy.
- *providing an effective voice to help ensure that all ocean-observing efforts for the United States complement and augment one another.* As highlighted in the recently

released draft report by the U.S. Commission on Ocean Policy Ocean Commission Report (available on-line at: www.ocean-commission.gov/), funding for oceanographic research is spread throughout many agencies in the United States government, thus complicating the coordination of ongoing efforts. A high priority in the near term is for ORION to actively engage the Integrated Ocean Observing System (IOOS) regional associations.

- *developing education programs in parallel with the observatory construction.* These programs should build upon existing efforts and capabilities and make extensive use of partnerships with the ORION science and technology community, and with established education organizations.
- *developing a clear and transparent procedure for scientists to gain access to the observatory.*
- *pursuing a system engineering approach*

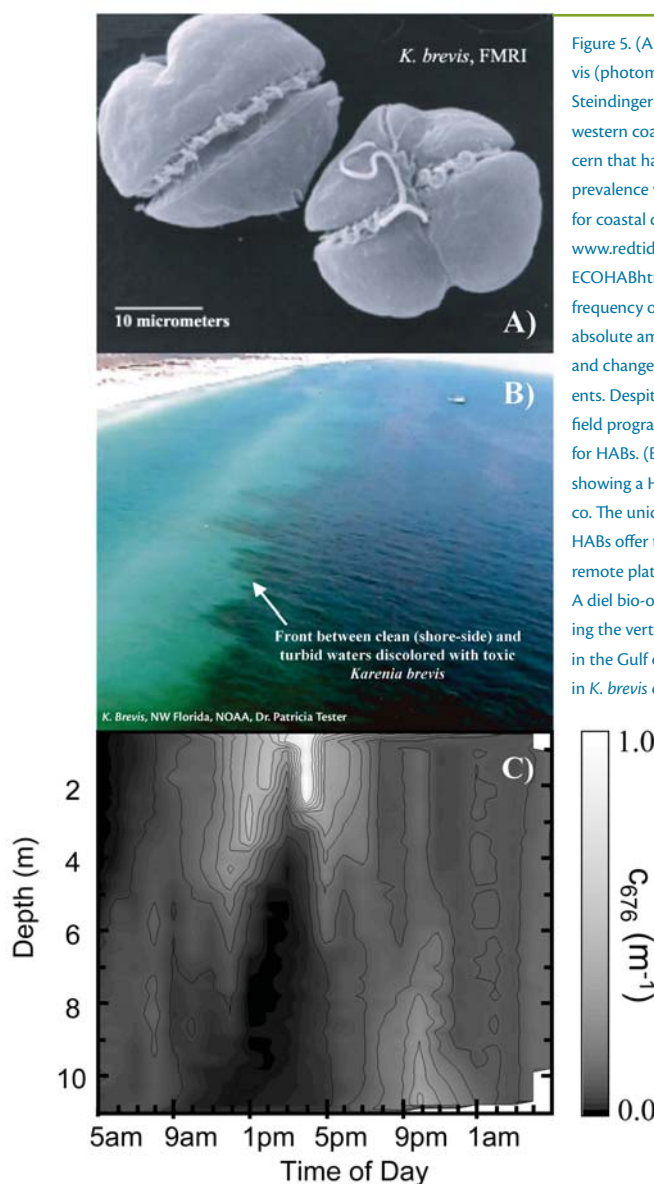


Figure 5. (A) The toxic red tide species *Karenia brevis* (photomicrograph kindly provided by Dr. Karen Steindinger) is a major environmental issue for the western coast of Florida. There is an increasing concern that harmful algal blooms (HABs) are growing in prevalence with potentially devastating consequences for coastal communities (for an overview go to <http://www.redtide.whoi.edu/hab/nationplan/ECOHAB/ECOHAB.html>). One hypothesis suggests that the frequency of HABs is rising in response to increasing absolute amounts of available nutrients in the water and changes in the relative concentrations of nutrients. Despite the concern, only a few comprehensive field programs sample the ecologically relevant scales for HABs. (B) A photo, provided by Dr. Patricia Tester, showing a HAB frontal boundary in the Gulf of Mexico. The unique optical features associated with some HABs offer the potential to monitor red tides from remote platforms that might be part of ORION. (C) A diel bio-optical (c = attenuation) time series showing the vertical migration of *K. brevis* during a cruise in the Gulf of Mexico. The depth-dependent changes in *K. brevis* directly impact our ability to use satellites to monitor HAB activity, as they only sample the upper water column. An integrated observing capability providing subsurface spatial data through time would greatly improve scientific studies of HABs.

for developing the OOI given the scale of the proposed observatory network. For example, trans-oceanic cables received sustained systems engineering before cable was laid in the oceans. System engineering plans should clearly lay out OOI's phased implementation.

- building a management structure that ensures that the science community has sufficient control of observatory infrastructure to permit execution of bold and innovative experiments not yet conceived.

Oceanography has had great success with individual and small research groups conducting focused research efforts. As the community embarks on these large interdisciplinary efforts, it must also safeguard individual research efforts. The core science budgets at NSF Division of Ocean Sciences must be protected so that the new ocean observing initiatives do not come at the expense of individual researchers conducting their research. Thus the call by the U.S. Commission on Ocean Policy to double the amount of money for ocean research must be vigorously pursued.

ACKNOWLEDGEMENTS

We thank the extensive input provided by Jim Bellingham, Robert Bidigare, Ken Brink, Francisco Chavez, Kendra Daly, John Delaney, Robert Detrich, Zoe Finkel, Scott Glenn, Dave Karl, Blanche Meeson, John Orcutt, and William Wilcock. We are most grateful to the attendees of the ORION meeting in Puerto Rico for their enthusiasm, humor, and intellectual energy. MKT is grateful for support from a WHOI Deep Ocean Exploration Institute fellowship.

REFERENCES

- Chavez, F.P., J. Ryan, S.E. Llutch-Cota, and M.C. Niquen, 2003: From anchovies to sardines and back: Multidecadal change in the Pacific ocean. *Science*, 299, 217-221.
- Clark, H.L. and A. Isern, 2003: The OOI and the IOOS—Can they be differentiated? An NSF perspective. *Oceanography*, 16(4), 20-21.
- Delaney, J.R., D.S. Kelley, M.D. Lilley, D.A. Butterfield, J.A. Baross, W.S.D. Wilcock, R.W. Embley, and M. Summit, 1998: The quantum event of oceanic crustal accretion: Impacts of diking at mid-ocean ridges. *Science*, 281, 222-230.
- Dickey, T., D. Frye, J. McNeil, D. Manov, N. Nelson, D. Sigurdson, H. Jannasch, D. Siegel, T. Michaels, and R. Johnson, 1998: Upper-ocean temperature response to Hurricane Felix as measured by the Bermuda Testbed Mooring. *Mon. Weather Rev.*, 126, 1,195-1,201.
- Glenn, S.M., and T.D. Dickey, eds., 2003: *SCOTS: Scientific Cabled Observatories for Time Series*, National Science Foundation Ocean Observatories Initiative Workshop Report, Portsmouth, VA, 80 pp., [Online] available at: http://www.geo-prose.com/projects/scots_rpt.html [accessed May 23, 2004].
- Glover, H.E., B.B. Prézelin, L. Campbell, M. Wyman, and C. Garside, 1988: A nitrate-dependent *Synechococcus* bloom in surface Sargasso Sea water. *Nature*, 331(14), 161-163.
- Jenkins, W.J., and J.C. Goldman, 1985: Seasonal oxygen cycling and primary production in the Sargasso Sea. *J. Marine Res.*, 43, 465-491.
- Karl, D.M., and R. Lukas, 1996: The Hawaii Ocean Time-series (HOT) program: Background, rationale and field implementation. *Deep-Sea Res. II*, 43, 129-156.
- Loeb, V., V. Siegel, O. Holm-Hansen, R. Hewitt, W. Fraser, W. Trivelpiece, and S. Trivelpiece, 1997: Effects of sea-ice extent and krill or salp dominance on the Antarctic food web. *Nature*, 387, 897-900.
- Michaels, A.F., and A.H. Knap, 1996: Overview of the U.S. JGOFS Bermuda Atlantic time-series study and the Hydrostation S program. *Deep-Sea Res. II*, 43, 157-198.
- McGowan, J.A., D.R. Cayan, and L.M. Dorman, 1998: Climate-ocean variability and ecosystem response in the Northeast Pacific. *Science*, 281(5374), 210-217.
- Moline, M.A., H. Claustre, T. Frazer, O. Schofield, and M.E. Vernet, in press: Alteration of the food web along the Antarctic peninsula in response to a regional warming trend. *Glob. Change Biol.*
- National Research Council, 2003: Enabling Ocean Research in the 21st Century: Implementation of a Network of Ocean Observatories. The National Academies Press, Washington, D.C., 240.
- Platt, T., 1984: Primary productivity in the central North Pacific: Comparison of oxygen and carbon fluxes. *Deep-Sea Res.*, 31, 1,311-1,319.
- Rudnick, D.L., and M.J. Perry, eds, 2003: ALPS: Autonomous and Lagrangian Platforms and Sensors, Workshop Report, 64 pp. [Online] available at: <http://www.geo-prose.com/ALPS> [accessed May 23, 2004].
- Schulenberg, E., and J.L. Reid, 1981: The Pacific shallow oxygen maximum, deep chlorophyll maximum, and primary productivity, reconsidered. *Deep-Sea Res.*, 28A, 901-919.
- Smith R.I.L., 1994: Vascular plants as bioindicators of regional warming in Antarctica. *Oecologia*, 99, 322-328.
- Summit, M., and J.A. Baross, 1998: Thermophilic subsurface microorganisms from the 1996 North Gorda Ridge eruption. *Deep-Sea Res. II*, 45, 2,751-2,766.
- U.S. Geological Survey, 1964a: U.S. Geological Survey Professional Paper 541. Figure 45. U.S. Geological Survey, Anchorage, Alaska.
- U.S. Geological Survey, 1964b: U.S. Geological Survey Circular 491. Cover. U.S. Geological Survey, Anchorage, Alaska.