

The growth of the New Jersey Shelf Observing System for monitoring plumes and blooms on the Mid-Atlantic continental shelf

Oscar Schofield, Robert Chant, Josh Kohut and Scott Glenn, Rutgers University
IMCS, 71 Dudley Road
New Brunswick, New Jersey, 08540
oscar@imcs.rutgers.edu and glenn@imcs.rutgers.edu

Abstract – To study changes occurring within the Mid-Atlantic Bight (MAB), we have constructed a shelf-wide ocean observatory. While initial efforts focused on using an undersea cable, our experience during a series of Coastal Predictive Skill Experiments demonstrated that spatial data was the most highly valued commodity. Because of this we have focused on developing a subsurface capability to mirror the existing satellite and HF Radar capabilities. Currently *in situ* spatial data is collected with a fleet of autonomous underwater Slocum Gliders to collect physical and bio-optical data throughout the year. Our scientific efforts have focused on understanding biogeochemical dynamics on the MAB. Topographic steering of currents and its impact on material transport on the MAB plays a central role in transporting material from the nearshore to offshore slope waters. Additionally hypoxia and anoxia dynamics in the coastal MAB appears related to offshore dynamics. Gliders provide ideal platforms for tackling those problems. This extended abstract will review some these results.

I. INTRODUCTION

Our History: Coming from the field of deep sea ecology, Frederick Grassle appreciated the limited time scientists have to observe natural phenomenon in the ocean and that this fundamentally inhibited understanding. He carried his vision for developing a “permanent window to the sea” in collaboration with Woods Hole Oceanographic by deploying an electro-optic cable from a shore lab to about 15 meters water depth. Since then, the cable has successfully delivered power to instruments since its deployment in 1996. What was quickly realized that modeling and process studies needed a spatial context to allow for

interpretation of the point time series data. Our efforts then focused on developing a flexible ocean sampling network that was coupled to a numerical nowcast/forecast model allowing researchers to adaptively plan field efforts with the guidance of biweekly evening forecast briefings. Field observations consisted of real-time satellite remote sensing, long range surface current radar measurements, ships, and underwater vehicles [1]. The satellites and radars are an effective and operational tool for collecting shelf-wide data (Figs. 1 and 2). To maximize total shelf coverage and revisit schedule we now access the international constellation of satellites (Fig. 1) HF radar are now also operationally robust and can provide

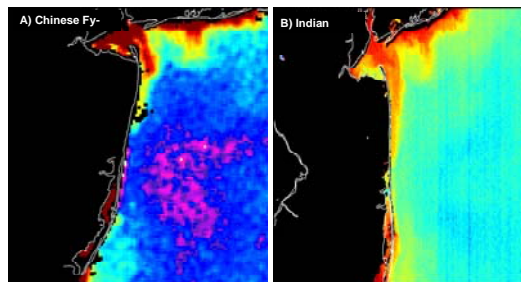


Fig. 1. Examples of ocean color imagery collected by the Chinese and Indian ocean color satellites. A) The Chinese satellite has the advantage of having an early morning overpass missing afternoon cumulus clouds that compromise afternoon imagery. B) The Indian OceanSat has the advantage of enhanced spatial resolution (~300 m). This makes it ideal for studying coastal phenomena such as river plumes. Pictured in panel B is the outflow of the Hudson river outflow in May 2004.

shelf wide coverage (Fig. 2). While spatial maps such as these have revolutionized oceanography; many of the features are found at depth below detection limits of satellites and surface radars. This has fundamentally limits interpretation. Advances in long duration autonomous underwater vehicles now offer the potential to maintain a subsurface mesoscale presence over several weeks. To this end our

group has focused on developing and deploying Webb Slocum Gliders to map physical and optical features on continental

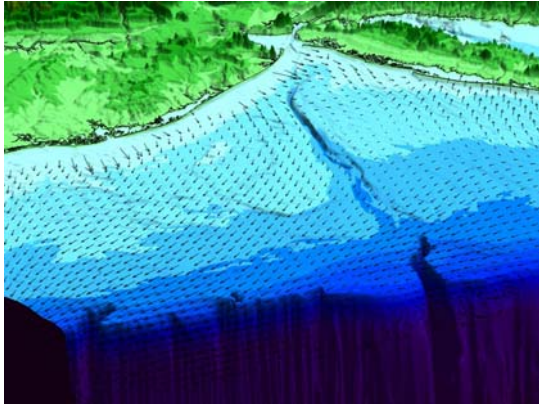


Fig. 2. HF CODAR surface currents over the Mid-Atlantic shelf.

shelves. These platforms have advanced sufficiently that they now anchor our shelf-wide sampling. This extended abstract will present some results and the science questions we are tackling with Webb Gliders.

II. GLIDERS AND SCIENCE MISSION

The Glider Platforms. Conceived by Douglas C. Webb, Slocum Gliders (named after Joshua Slocum, the first man to single-handedly sail around the world) undulate through the water column by changing their buoyancy (Fig. 3). The sinking and ascending trajectories allow the Gliders to travel about 25-30 km/day for



Fig. 3. A Webb Slocum Glider descending into the primordial depths. The science bay is directly behind the wings. The communications package is located in the tail, which is held above the water line when the Glider is at the surface.

approximately a month in shallow-water

deployments (>200 m). Communication is through satellite Iridium or Freewave radio modems when the Glider is at the surface. This allows Gliders to be controlled remotely anywhere around the Earth. We have deployed Gliders for missions ranging from Northeast United States, the Gulf of Mexico, and the Mediterranean (Fig. 4). From late October 2003 until mid August 2004, we have flown Gliders 200 out of the last 281 days, with these

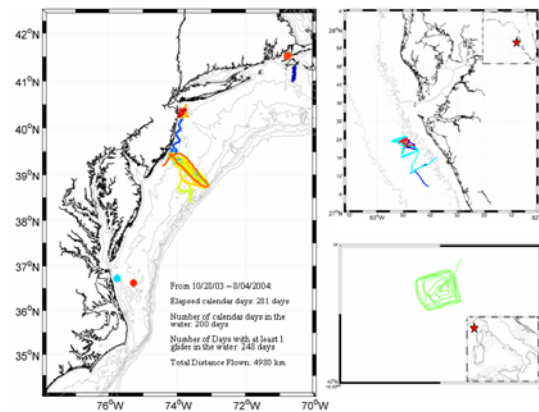


Fig. 4. Locations where Webb Glider have been deployed by the Rutgers Coastal Ocean Observation Lab in 2003 and 2004.

missions covering 4980 kilometers. All our Gliders were controlled from a suite of computers maintained at Rutgers in New Jersey. *Gliders are robust and operational tools and we believe they are ready to be utilized by the wider community.*

The Gliders can make a suite of physical measurements including temperature, salinity, and depth averaged currents. We have currently integrated three optical sensors into Webb Gliders. Our Gliders have a suite of optical measurements. The optical sensors include a HOBI labs Hydroscat-2 providing 2 measurements of backscatter (b_b) and chlorophyll fluorescence (CHL_{fl}). We have integrated a Wetlabs Scattering-Attenuation System (SAM) which is a small and robust set of sensors capable of measuring backscatter (b_b), attenuation (c) and colored dissolved organic fluorescence ($CDOM_{fl}$). We miniaturized a capillary waveguide spectrometer [2] to provide hyperspectral absorption measurements (1.2 nm resolution). The waveguide system, named the Brevebuster, has been deployed in the Mid-Atlantic

Bight and in the Gulf of Mexico. Calibration

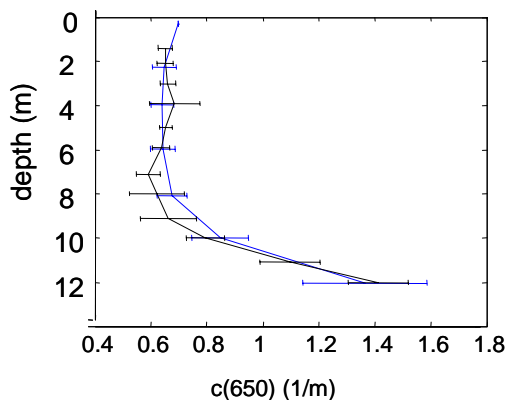


Fig. 4. AC-9 (blue) versus SAM Glider measurements of attenuation at 650 nm (black).

and validation of each of these sensors is an ongoing effort; however initial efforts suggest Glider measurements are accurate (Fig. 4).

Hypoxia/Anoxia on MAB. Widespread declines in bottom dissolved oxygen (DO) levels to hypoxic/anoxic conditions are often observed in the MAB and represent a major economic problem. It has been documented that in over 1/3 of the summertime bottom water observations (NOAA surveys from 1977 to 1985) have reduced bottom DO levels concentrated inshore of the 20 m isobath. Low DO off New Jersey, were strongly correlated with deep pycnoclines and strong persistent southerly to southwesterly winds with hypoxic conditions clustered offshore specific estuaries and inlets. The observed spatial distribution led to the hypothesis that the source of organic matter was from the terrestrial ecosystems; however sometimes hypoxic conditions were associated with pristine conditions and some anthropogenically impacted estuaries were not associated with the low DO. This lead us to hypothesize that upwelling might provide the organic matter fueling the low DO zones along New Jersey. Topographic variations associated with ancient river deltas promote upwelled water, which is initially a feature along the entire NJ coast, to evolve into an alongshore line of recurrent upwelling centers that are co-located with historical regions of low dissolved oxygen. The most intense upwelling (size and duration) occurs in summers following colder than usual falls and winters perhaps reflecting

the spatial extent of the MAB Cold Pool which ultimately feeds the coastal upwelling [3].

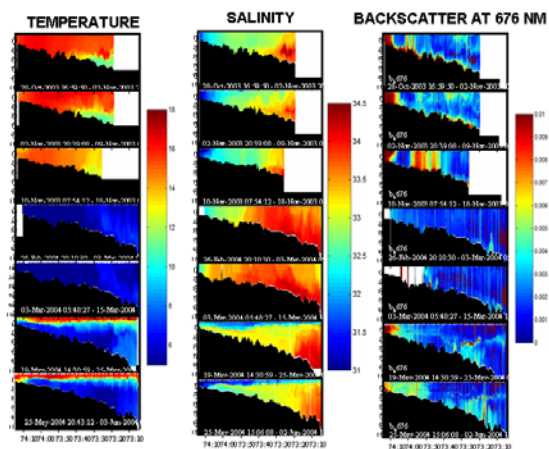


Fig. 5. Cross shore Glider transects of temperature, salinity, and particle backscatter at 676 nm. The data is from autumn, winter and spring 2003-2004.

Despite the fact that the Cold Pool is a dominant feature on the shelf, first described by Bigelow in 1933, little is known about its interannual variability and its subsequent coupling to coastal upwelling. Therefore we required a spatial perspective over annual time scales to define the biogeochemical state and potential of the MAB for producing hypoxic and anoxic conditions. We are currently using Webb Gliders to understand the subsurface dynamics in the concentration, transport, and transformation of organic material on the MAB. Optical sensors are the key to documenting the particle dynamics.

Glider shelf-wide time series 2003-2004: We have initiated a long term time series using bio-optical Gliders to transect at least 2 weeks each month from the nearshore Long term Ecosystem Observatory (LEO) to the edge of the continental shelf (~200 kilometers offshore, Fig. 5). After our first year, the seasonal cycle shows the disruption of late autumn shelf stratification followed by a rapid cooling during the month of December. The winter months (November through April) are associated with a well-mixed water column with the MAB cold pool representing one of the warmer water masses on the shelf. Numerous storms keep the water column well-mixed in the winter and associated with these storms is a resuspension benthic particulate material. The resuspension of particles is

throughout the watercolumn and is a dramatic feature on the shelf. The near total presence of clouds at these times masks the presence of such large resuspension events. The shelf begins to stratify in the month of May and the warm upper mixed layer deepens to almost 20 m thick through the summer and autumn. Particle concentrations are high in the nearshore waters (< 30 m) and the dynamics reflect alternating upwelling and downwelling conditions, storm induced benthic resuspension, and outflow from rivers/estuaries. By summer, a particle maximum is observed with the thermocline in the nearshore waters (<30 m). In offshore waters the particle maximum is found below the thermocline (and below any satellite detection) and is largely associated with MAB cold pool. The particle maximum in these waters is associated with the upper edge MAB cold pool coincident with inner edge of offshore high salinity intrusions that are a dominant feature during the winter months. Particle concentrations increase gradually in late spring and early summer, consistent with particle export from productive surface waters. There also appears to be a particle maximum associated in the bottom waters at the outer edge of the MAB cold pool consistent with detached bottom boundary layer upwelling dynamics. We believe that spatial physical and bio-optical time series will be immensely valuable as recent data suggests interannual-to-decadal scale variability in the water masses entering the MAB and these changes appear to be associated with basin-scale climatic variability.

Nepheloid & Buoyant Layers. Characterizing *in situ* water turbidity is critical to numerous applied science needs. Often water column turbidity is used to judge water quality and also impacts the efficacy of sensors that use optical measurements for a variety of purposes including laser detection of mines and prediction of the operational detection horizon for bioluminescence. Efforts over the last decade have focused on developing remote sensing approaches capable of providing rapid environmental assessment over operationally relevant spatial scales. Two major layers found in varying extent in almost all coastal waters

water masses are bottom nepheloid and surface buoyant plume layers. We are using Gliders to map the spatial extent of these both layers in the coastal waters off New Jersey (Figs. 6 & 7).

Nepheloid layers are optically significant and are almost a universal feature on continental shelves (Fig. 6 & 7). The maintenance of these

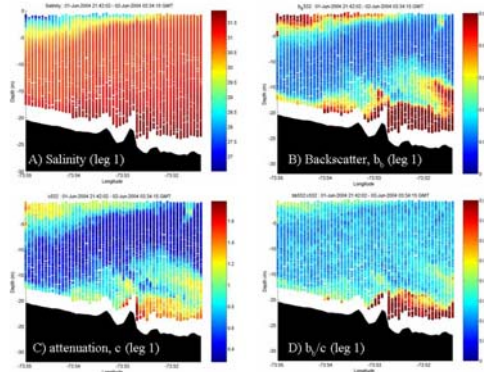


Fig. 6. Physical and optical data collected during Leg 1 (see Figure 3) in June 2004. The data shows a turbid low saline water in the nearshore surface waters, and nepheloid layers offshore. Note that attenuation is greater in the nepheloid layer than in low saline plume.

nepheloid layers is regulated by the resuspension of material and the relative rates of aggregation and disaggregation. Aggregation and disaggregation rates depend on sediment concentration and turbulence in the water column, which in turn are functions of the wave and current shear stresses at the seabed, the distance from the bottom, and the stratification. The enhanced concentration of particles is strongly associated with increased light backscatter and attenuation (Fig. 6). The optical properties of the nepheloid layers depend not only on sediment concentration but also on organic particle composition and size distribution. For example, backscattering will be an order of magnitude higher in resuspended sediments that contain inorganic material [4]. *The nepheloid layers mapped using Webb gliders have enhanced backscatter to attenuation ratios sometimes two to three times greater than the turbid buoyant plumes and five times greater than shelf water. This enhanced ratio likely reflects the significant presence of inorganic particles.*

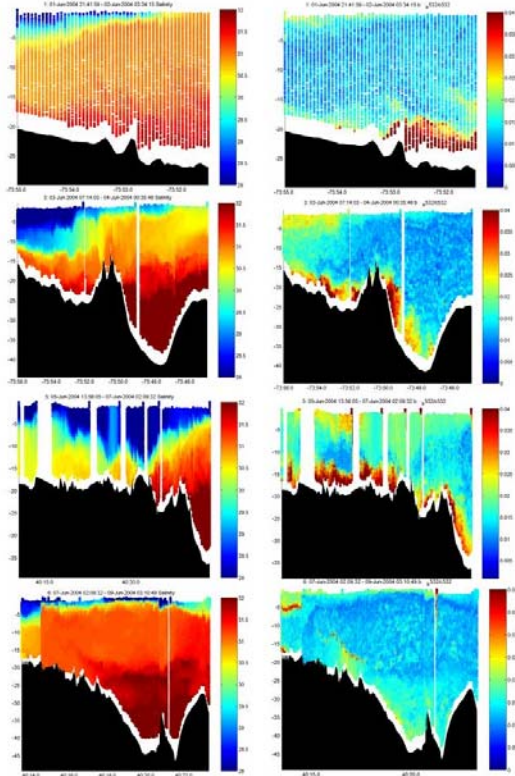


Fig. 7. The data collected during 4 transects of a bio-optical glider in June 2004. The right hand panels are salinity. The low saline water of the Hudson River and the high saline water in the Hudson canyon are clearly evident. The left hand panels are the b_b/c ratio for 532 nm.

Another one of the other major optical features present in coastal waters are buoyant plumes. Buoyant coastal currents extend along much of the US east coast and consist of a series of estuarine plumes that are fed by rivers with typical maximum discharge rates on the order of 1000 m³/s. Among these rivers the Hudson's flow rate is typical, yet it may dominate the transport of nutrients and chemical contaminants to the coastal ocean. For well over 100 years it has been the most urbanized estuary in the US. Our efforts are focused on using optics and salinity to map the distribution of the buoyant plume in order to facilitate adaptive sampling. The buoyant plumes are spatially extensive (Fig. 4-8) and are associated with both high particle concentrations and Colored Dissolved Organic Matter (CDOM). *The high CDOM concentrations allow buoyant plumes to be*

differentiated fluorometrically from nepheloid layers (Fig. 8). While particle loads are high within the plume, the high absorption of CDOM is a significant proportion of the total attenuation. Results confirm findings of others [5-6] that CDOM is an effective tool for mapping the Hudson River plume on the MAB.

Overall our results demonstrate that buoyant plumes and nepheloid layers can be effectively mapped with Webb Gliders. Enhanced b_b/c values are associated with nepheloid layers

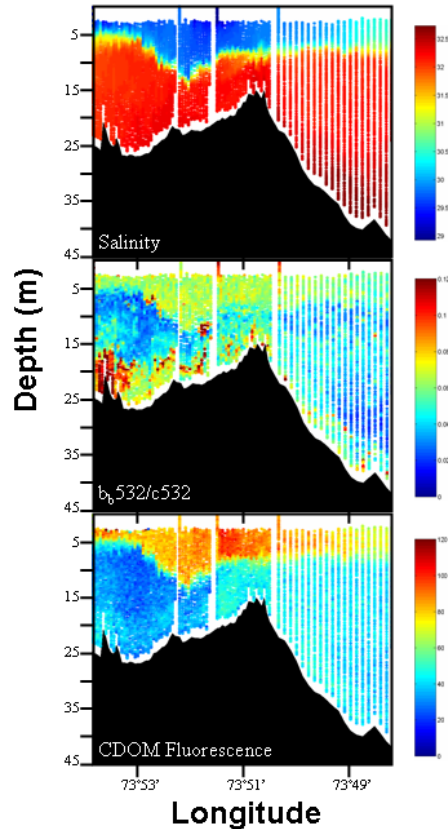


Fig. 8. Data collected at the Hudson river plume in April 2004. Note the high CDOM fluorescence associated with the low salinity plume.

and enhanced CDOM fluorescence is associated with low salinity buoyant plumes. Given the ability to collect spatial seasonal data, Webb gliders will provide an effective tool for mapping plumes in coastal waters. The ability to map inherent optical properties and fluorescence will provide an effective means for water mass discrimination in coastal waters.

CONCLUSIONS FROM OUR GLIDER EXPERIENCE

- Gliders offer the opportunity for the oceanographer to be at sea all year round.
- Current battery capacity allows Webb Gliders to fly close to 500 kilometers using currently available instruments.
- Physical and optical sensors are amenable to autonomous platforms such as Webb Gliders.
- Iridium communications allow scientists to maintain a global presence.
- A full suite of physical measurements (temperature, salinity, depth averaged currents) can be collected during all conditions including storms.
- Optical measurements providing backscatter and attenuation allow particle dynamics to be defined over shelf-wide seasonal time scales. The ratio of backscatter to attenuation provides an indicator of the nature of the material present.
- The fluorescence of CDOM is detectable in the coastal ocean with AUV mounted sensors. It is an effective means to map River plumes, and differentiate turbid buoyant layers from turbid benthic nepheloid layers.

REFERENCES

- [1] O. Schofield, T. Bergmann, W.P. Bissett, F. Grassle, J. Kohut, M.A. Moline, and S. Glenn “Linking regional coastal observatories to provide the foundation for a regional ocean observation network” *J. Ocean. Eng.*. Vol 27(2), pp. 146-154. 2002.
- [2] G. J. Kirkpatrick, C. Orrico, M.A. Moline, M. Oliver, and O. Schofield, “Continuous hyperspectral absorption measurements of colored dissolved organic material in aquatic systems” *Applied Optics* Vol. 42(33) pp. 6564-6568, 2003.
- [3] S.M. Glenn, R. Arnone, T. Bergmann, W.P. Bissett, M. Crowley, J. Cullen, J. Gryzmski, D. Haidvogel, J. Kohut, M.A.

Moline, M. Oliver, C. Orrico, R. Sherrell, T. Song, A. Weidemann, R. Chant, O. and Schofield, O. “Biogeochemical consequences of summer upwelling on the Mid-Atlantic Bight” *J Geophys. Res.* (In Press), 2004.

- [4] M.S. Twardowski, E. Boss, J.B. Macdonald, W.S. Pegau, A.H. Barnard, and J.R.V. Zaneveld. “A model for estimating bulk refractive index from optical backscattering ratio and implications for understanding particle composition in case I and case II waters”. *J. Geophys. Res.* Vol. 106 pp. 14,129-14,142, 2001.
- [5] D.M. Johnson, J. Miller, O. Schofield “Dynamics and optics of the Hudson River outflow plume”. *J. Geophys. Res.* Vol, 108, doi:10.1029/2002JC001485. pp. 1-9. 2003.
- [6] M. Oliver, O. Schofield, T. Bergmann, S. M. Glenn, M. A. Moline, and C. Orrico, “*In-situ* optically derived phytoplankton absorption properties in coastal waters and its utility for estimating primary productivity rates” *J. Geophys. Res.* Vol. 109, C07S11, 10.1029/2002JC001627, 2003.